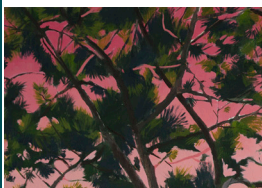




RAWLINSON & HUNTER
ART EXHIBITION

PRIVATE VIEW

WEDNESDAY 27 APRIL 2022



RAWLINSON
& HUNTER

INGRAM TALENT
CONTEMPORARY

Rawlinson & Hunter has had a long history of involvement with the art world by acting for artists, galleries and auction houses, with Partners also serving as trustees for national museums and charitable trusts owning art collections.

Support for the arts by the firm is provided through sponsorship and pro-bono work and, as part of the refurbishment of our London reception and meeting rooms, we're delighted to be able to display an exhibition of contemporary art curated by Jo Baring of The Ingram Collection.

The Ingram Collection was founded in 2002 by serial entrepreneur and philanthropist Chris Ingram. The calibre and breadth of the collection, coupled with its active lending programme to museums and galleries across the UK, means it is now recognised as one of this country's most significant collections of Modern British Art.

The Ingram Collection supports recently graduated and emerging artists through its Ingram Contemporary Talent programme. The highlight of this programme is the annual Ingram Prize, sponsored by Rawlinson & Hunter. This new display of art features the work of recent Ingram Prize alumni, alongside work by Sir Richard Long.

Most of the works included in this exhibition are available to purchase, details of this can be found in the price list.

Contents

4	Bianca Barandun
4	Sylvia Batycka
5	Bislacchi
5	Kristina Chan
6	Marc-Aurèle Debut
6	Matt Feldman
7	Alice Irwin
7	Elizabeth Jackson
8	Aphra O'Connor
9	Abi Ola
9	Ryan Orme
9	Ella Porter
10	Maria Positano
10	Mircea Teleagă
11	Josh C. Wright
11	Maddie Yuille
12	Sir Richard Long

Bianca Barandun

Bianca Barandun (b.1984 in Switzerland) works across print, painting and sculpture. With a background of studying Scientific Illustration and Illustration she holds an MA Print from the Royal College of Art London, graduating in 2017. Since then Bianca has exhibited widely both on a national and international level, including solo shows at Blank100, London and Unit 1 Gallery/Workshop, London, as well as a group show at Kunsthalle Appenzell. Bianca's work is based on her observations of the formation of groups and social clustering. Her art uses a variety of media to create a visual suggestion of the complexities of society.



Morphing Memories

2021

Ceramics, transfer, pigment

43 x 41 cm, 46.5 x 34 cm

Sylvia Batycka

Sylvia Batycka, long time Londoner of Slavic origin, now lives and works in Kraków. An alumna of University of The Arts London, Sylvia completed her MFA Fine Art in 2019 and was shortlisted in the same year for The Ingram Prize. In 2021 she was awarded an artist residency and solo show at The One Paved Court Gallery in London. For the past few years her painterly art practice has been saturated with female narratives and aesthetics of absence. Her oil paintings are filled with images of foremothers, contemporaries, and sartorial chronicles. In her work she aims to enact intermediary power between past and present, photography and painting.



The commute

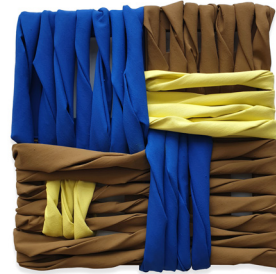
2021

Oil on wood panel

80 x 120 cm

Bislacchi

Bislacchi (Italy, 1995) is a visual artist living and working between London and Milan. He graduated in 2018 from City and Guilds of London Art School. Solo shows include: "Camera con vista", curated by Ilaria Monti at Display in Parma (2021). Group shows include: "Show_4", mood|project gallery, Naples (2022); "Yellow Archangel Perceiving Anomalies", General Practice, Lincoln (2021); "After Hours", Bowes-Parris Gallery, London (2020); "Rea Art Fair", Fabbrica del Vapore, Milan (2020). He was an artist in residence at: "Viafarini", Milan (2021); Cepovan, Slovenia (2019); "PADA Studios", Barreiro (2019); "ARTPIQ Summerhouse", Dusseldorf (2018). He was awarded "The Chadwyck-Healey Prize for Painting" (2018).



Wall of Canvas

Starry Night

2021

Acrylic pigment on canvas on
stretcher bars

44.4 x 44.2 x 10 cm

Kristina Chan

Kristina Chan's practice utilises narrative and site specificity to evoke a felt history. Her work explores the boundaries between individual and collective memory, and how these narratives affect our interpretation of space. Her work has been widely exhibited at Musée du Louvre, Royal Academy of Fine Art Antwerp, Mall Galleries London, Beers London, Royal Academy, among others. She is the recipient of the Canadian Council for the Arts (CCA) Research and Creation Grant (2021), Ingram Prize, CCA Digital Originals Innovation Grant, Queen Sonja Print Award Finalist (all 2020) and two-time recipient of the Elizabeth Greenshields Foundation Grant (2017/2018). Her works reside in the Royal Collection, V&A and Ingram Collection.



Canopy I

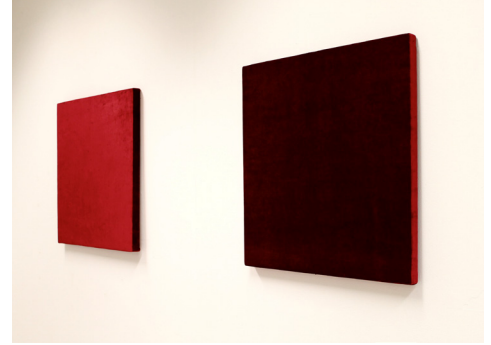
2021

Lithography, drawing, monoprint,
unique

84 x 62 x 2 cm (framed)

Marc-Aurèle Debut

Marc-Aurèle Debut (b.1990, France) lives and works in London. He received his BA Fine Art from Central Saint Martins and recently his MA in Sculpture from the Royal College of Art. M-A Debut's interests originally led him to medical school, he then stepped away from the clinical context to pursue art studies roused by the philosophical and artistic theories associated with the human body. These theories are rooted in M-A Debut's practice as he questions the essence of human relationships, memory, physical space, objects and techniques to identify the body's intrinsic reactions to structural and environmental influences. His work explores the cultural and psychological complexities of sexuality and body image, human anatomy with its emotions and physiology.



Deux carrés rouges (Two red squares)

2020

silk velvet fabric on linen, pine wood frames

70 x 70 x 3.8 cm each

Matt Feldman

Matt Feldman (b. 1996) lives and works in London. Feldman utilises film, sound installation, and sculpture to create speculative environments that weave together history, personal narratives, symbolism, and documentation. He is particularly interested in studying the acoustic ecologies of human infrastructure, its decay, and transformation throughout time. The work often attempts to analyse the soundscape of infrastructure and its interplay with the natural environment through socio-political and personal interpretations of the place. Recent exhibitions include "The New Folk" at the North Lincolnshire Museum, and his solo exhibition "Ruinous Portal" at Kunstraum. He will be presenting a solo exhibition at Eastcheap Projects in Letchworth in September 2022 and a lecture on the expanded field of mosaic at the London School of Mosaic in October 2022.



Tornado Warning

2020

Ceramic mosaic with oak frame

40 x 58 cm

Alice Irwin

Alice Irwin graduated from the Royal College of Art in 2018 and works with printmaking and sculpture to reference childhood experiences and create imaginary worlds. Her work aims to convey the innocence we possess as children but also express the message of human identity; some aspects of her work are playful, while others are more thought-provoking. Irwin presented a solo show at the Piece Hall in 2020 and at the Yorkshire Sculpture Park in 2018. She was awarded the Contemporary Art Trust Prize in 2017. Her group of sculptures entitled 'Peeps', commissioned by Sky Arts, is currently being exhibited in Canterbury at The Beaney House of Art and Knowledge.



Go To Bed (I)

2018

Screenprint on paper

45 x 30 cm

Elizabeth Jackson

Elizabeth Jackson (b.1991) lives and works in London. In 2013 she graduated with a BA in Fine Art from Central Saint Martins and in 2021 with an MA in Ceramics & Glass from the RCA. On graduating she was awarded the Anglo Swedish Exchange Residency at Konstfack in Stockholm, Sweden. Her work has been exhibited at the British Ceramic Biennial and Ingram Prize amongst others.



cushioned questions

2021

Stoneware and parian

Approx 35 x 47 x 32 cm

Aphra O'Connor

Aphra O'Connor is a British sculptor working primarily in clay. She graduated from the Royal College of Art with a Masters degree in Ceramics and Glass in 2019 and from Wimbledon College of Art in 2014 with a BA in Sculpture. This sculptural background allows her to visualise clay outside of the traditional craft pathway while continuing to demonstrate historical ceramic techniques. O'Connor creates her ceramic sculptures by repurposing discarded objects that contain interesting 3D patterns, casts and records their forms in plaster, then plays with ways to amalgamate them. The objects undergo a metamorphosis, mutating from everyday object into abstracted ceramic collage.



Concatenate Contour 1
2021

Earthenware clay, underglaze and slip on a perspex base
20 x 14 cm

Abi Ola

Abi Ola graduated in 2021 with a Master of Fine Arts from The Slade School of Fine Arts, and in 2019 with a Bachelor of Fine Arts from Goldsmiths, University of London. Abi creates her own pattern designs inspired by old family clothing, photographs, and tribal art, as a way of exploring her heritage. Her portraiture paintings are often faceless to allow the viewer to place themselves within them. Recent exhibitions include: Duo show with Ilke Cop, at the VCRB Gallery, Belgium, 2022, The Ingram Prize, London, 2021, London Grads Now, Saatchi Gallery, 2021-22, The Royal Academy of Arts Summer Exhibition, London, 2021-22, Bloomsbury Festival Prize, solo exhibition, London, 2020-21.

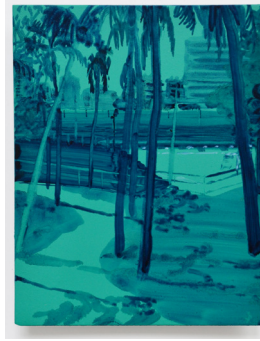


Traffic Jam
2022

oil, oil pastels, screenprint, photographic print, pen and fabrics on canvas
60 x 60 cm

Ryan Orme

Ryan Orme (b. 1986) is a London based artist working across drawing, painting and sculpture. He studied Fine Art (BA hon) at UWE, Bristol 2009 and then Sculpture (MFA) at the Slade 2019. Whilst at the Slade he was awarded the Felix Slade Bursary and the Prenkerd Jones Memorial grant. He was also selected for the HKBU residency in Hong Kong December 2019. Ryan was selected for Bloomberg New Contemporaries 2019 and Towner International 2020. His work explores the relationship between our internal and external worlds, using place as a means of accessing something personal and relational.



Ocean Park

2021

Oil on aluminium

20 x 14 cm

Ella Porter

Ella Porter is a London based artist specialising in ceramics and printmaking. Her practice displays a strong relationship between surface and form, informed by her BA in painting and printmaking from Glasgow school of art. Ella explores ideas surrounding the maker's mark, temporality, trace and place. Following the GSA fire of 2014, Ella was awarded a Phoenix Bursary and received the NL Culture prize. She began working with clay which led to a ceramics diploma in 2017 and later an MA in ceramics at The Royal College of Art, 2021, which was supported by The Queen Elizabeth Scholarship Trust.



The Minds-Eye
Window

2021

Porcelain

19 x 123 x 1.5 cm

Maria Positano

Maria Positano is based in London, where she completed her BA (Hons) in Sculpture at The City and Guilds of London Art School in 2018, with a First Class Degree. She is currently completing her MA Sculpture at The Royal College of Art. Maria's work is included in several private collections, and she has exhibited internationally; recent solo and group exhibitions include: A Perfect Place at Studio Block M74 in March 2022, Mexico City; One by One at Fiumano Clase in March 2022, London; The Running Water Water Takes me to a Father Lake, Meisyakan Contemporary Gallery in August 2021, Ningbo, China. Her work stems from a process-led enquiry, aimed at reflecting on cultural constructions of personal and historical systems of meaning, particularly expressed in their embedded material cultures.



Three Studies for 'Here They Rise, Declining'
2018

Black monotype and etched background on Somerset Paper, edition 2/2, each 74.2 x 54 cm

Mircea Teleagă

Mircea Teleagă (b. 1989, Romania) is a Slade School of Fine Art MFA Painting graduate. He was awarded the Sarabande Lee Alexander McQueen Scholarship, having been selected for this award by artist Dinos Chapman. Notable exhibitions include: The Ingram Prize, London (2021); IN CONVERSATION - bo.lee galley, London (2021); Eye of the Collector, Two Temple Place, London (2021); WORKS (solo-show) - Europe House, London (2019); Presence (solo-show) Sarabande, London (2018); Romanian Eyes, Space K Galley, Seoul, (2018); let it burn (solo-show) Sarabande, London (2017). Collections in which Teleagă's work can be found include: AVA-HKBU, Hong Kong; Kolon, South Korea; KHNP, South Korea; Simons & Simmons, London and Soho House, Amsterdam and Paris.



Seoul Pines
2020

oil on canvas
170 x 130 cm

Josh C. Wright

Josh C. Wright (b. 1993) is a London based sculptor and creates precarious forms that inhabit a sense of uncertainty and instability, fuelled by his own anxieties as an artist living and working on the edges of a city. His practice is experimental and he draws endless inspiration from the city's physical and conceptual landscape. In May 2021 Wright was the recipient of an Arts Council England 'Developing Your Creative Practice' award which has been affording time this past year to research into the relationship between anxiety and sculpture. The pandemic has only heightened and placed greater urgency and significance to his work and research.



Untitled (Brick Study 2)

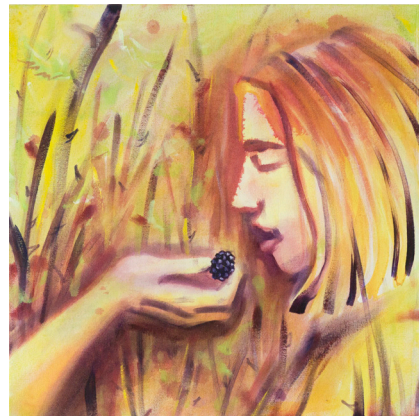
2020

watercolour on paper

29.7 x 21 cm

Maddie Yuille

Maddie Yuille (b. 1988, London) is a visual artist living and working in London. Since graduating with an MA in Fine Art from City and Guilds of London Art School (2019), she has been shortlisted for the Ingram Prize (2021), the Ashurst Emerging Artist Award (2020), and the Contemporary British Painting Prize (2019). She has taken part in numerous group shows, including with Soho Revue, The Artist's Contemporary, Berntson Bhattacharjee, Subsidiary Projects and The Auction Collective and undertook the Elephant Digital Artist Residency in November 2021.



Communion

2021

oil and ink on canvas

55 x 55 cm

Sir Richard Long

Richard Long is a sculptor and one of the best-known British land artists. Long is the only artist to have been short-listed four times for the Turner Prize. He was nominated in 1984, 1987 and 1988, and then won the award in 1989 for *White Water Line*. He lives and works in Bristol, the city in which he was born. Long studied at Saint Martin's School of Art before going on to create work using various media including sculpture, photography and text. His work is on permanent display in Britain at the Tate and Bristol City Museum and Art Gallery as well as galleries in America, Switzerland and Australia. Long's work has broadened the idea of sculpture to be a part of performance art and conceptual art. His work typically is made of earth, rock, mud, stone and other nature based materials. In exhibitions his work is typically displayed with the materials or through documentary photographs of his performances and experiences..



Tide on the Turn

2018

Screenprint on Somerset

410gsm

148 x 58.5 cm

Half Tide

2018

Screenprint on Somerset

410gsm

148 x 58.5 cm



Most of the works included in this exhibition are available to purchase, details of this can be found in the price list.

**INGRAM TALENT
CONTEMPORARY**